



Firmware Instructions

CAU3I Desktop External

INSTALLATION STEPS

1 STEP 1: Download the firmware .zip - file associated with the CAU3I.

2 STEP 2: Once the firmware is downloaded, un-zip the file contents onto your desktop. Make sure you see 1 folders:

“USB300 Firmware 2416”.

3 STEP 3: Plug in your CAU3I to a power source using the packaged power supply. Connect the CAU3I to your computer via USB 2.0 or 3.0 cable and allow your computer to detect the device.

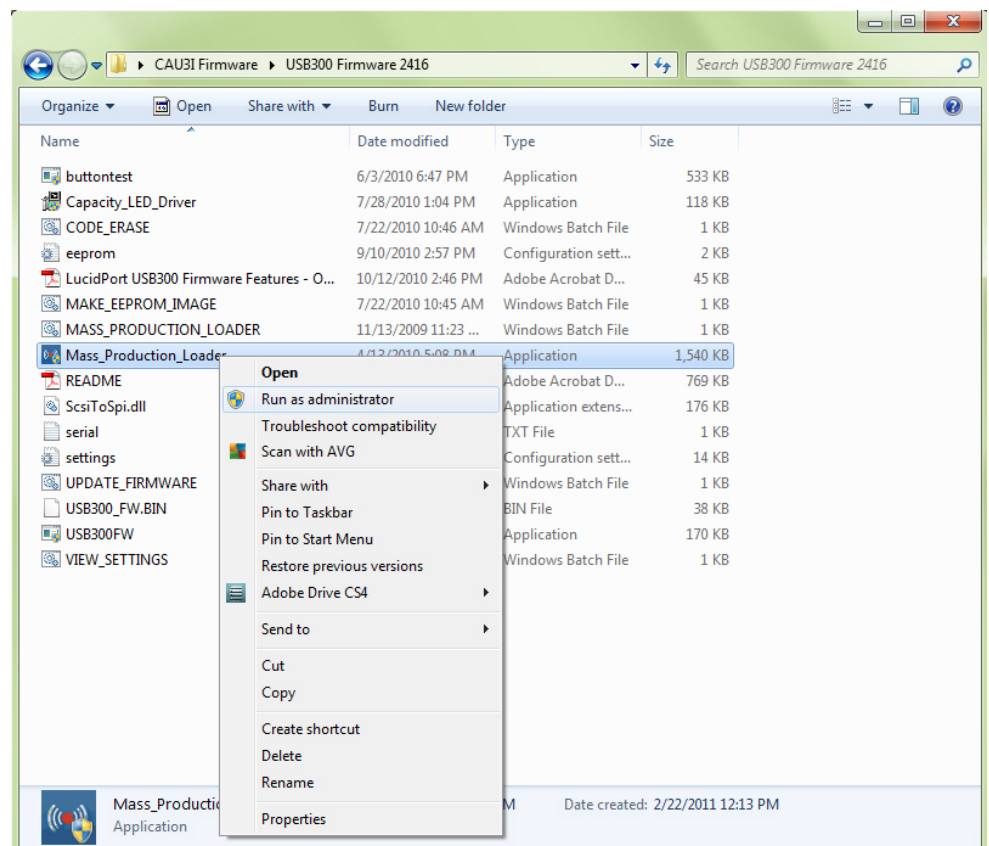
Unplug any other external devices that are currently plugged into the same computer, aside from the product you are updating.



4 STEP 4: Open the “USB300 Firmware 2416” folder and locate the lower case “Mass_Production_Loader” file.

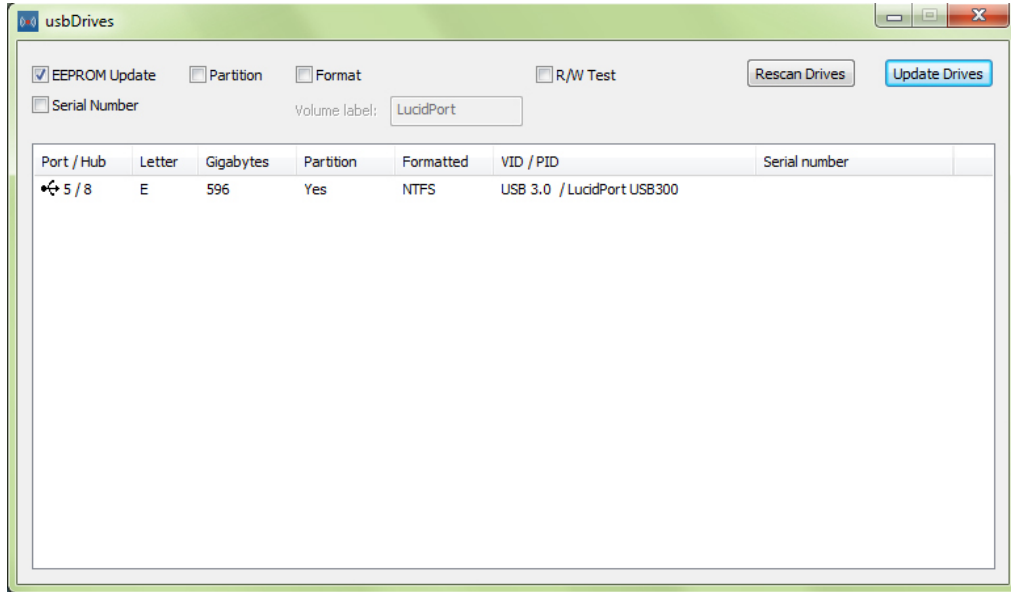
Right-click and select “Run as Administrator.”

Allow this program to make changes to your computer.

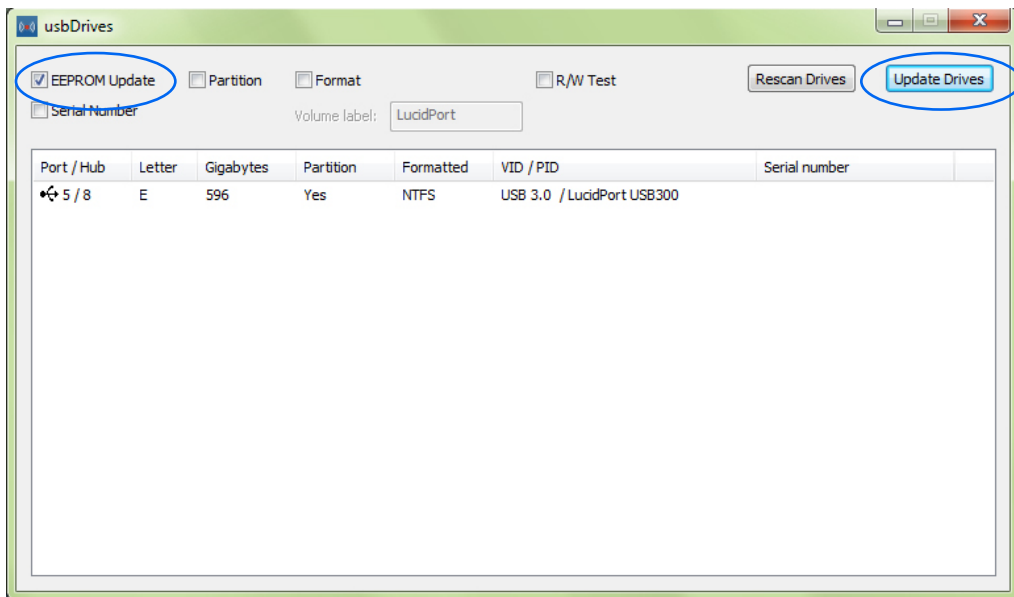


CAU3I FIRMWARE INSTRUCTIONS

5 **STEP 5:** MPTools will open with the screen shown below. Make sure you see only one item in the spread sheet section. Depending on which port you plug your device into, your display may look a little different than the one below.



6 **STEP 6:** Once you have verified that your device is showing on the MPTool screen, check to see that only the “EEPROM Update” is checked. Then, press “Update Drives” on the top left hand side of the window. This will begin the update.



CAU3I FIRMWARE INSTRUCTIONS

7

STEP 7: You will then see a black pop-up window appear. Once the update is finished, it will flash a very quick green screen with the word “SUCESS” on the bottom and close automatically. Please see the images below for reference.

```
C:\Windows\system32\cmd.exe
Enable bits extended: 0x00000400
USB Product ID: 0x5000
USB Serial: Load from HDD
SCSI Product: "LucidPort USB300"
SCSI Serial: Load from HDD
GPI00:
GPI01:
GPI02:
GPI03:
GPI04:
GPI05:
GPI06:
GPI07:
Cable Compensation:
UPDATING REU2:
*****
Bank1: valid
Current size: 38534
Current version: 1

C:\Windows\system32\cmd.exe
GPI01: Disabled
GPI02: Disabled
GPI03: Disabled
GPI04: Disabled
GPI05: Disabled
GPI06: SATA power & activity light
GPI07: SATA power
Cable Compensation: Enabled
UPDATING REU2:
*****
Bank1: valid
Current size: 38534
Current version: 5
Bank2: valid
Current size: 38534
Current version: 5
New bank: Bank 2
New version count: 6
Writing firmware

C:\Windows\system32\cmd.exe
Bank1: valid
Current size: 38534
Current version: 5
Bank2: valid
Current size: 38534
Current version: 5
New bank: Bank 2
New version count: 6
Writing firmware
Writing Custom Settings
Custom settings verified!
Firmware verified!
PLEASE POWER CYCLE THE DEVICE
#### # # #### #### #### ####
| # # # # # # # # # #
|### # # # # # # # # #
# # # # # # # # # #
|### #### #### #### #### ####
```

8

STEP 8: Next, turn your device off and back on again to power cycle your CAU3I. Close any firmware update windows.

Congratulations! Your firmware is now update. You can begin using your CAU3I.