



Firmware Instructions

RETRIEVER DISK DUPLICATOR

INSTALLATION STEPS

1 STEP 1: Download the firmware .zip - file associated with the Cavalry Retriever.

2 STEP 2: Once the firmware is downloaded, un-zip the file contents onto your desktop. Make sure you see 2 files:

“MFGkit_Prolific_General_1008_20110110.exe” and “PL2773_JBOD_ZBT_DDSHU3-B_20110225.eep”.

3 STEP 3: Plug in your Cavalry Retriever to a power source using the packaged power supply. Connect the Retriever into your computer via USB 3.0 cable and allow your computer to detect the device.

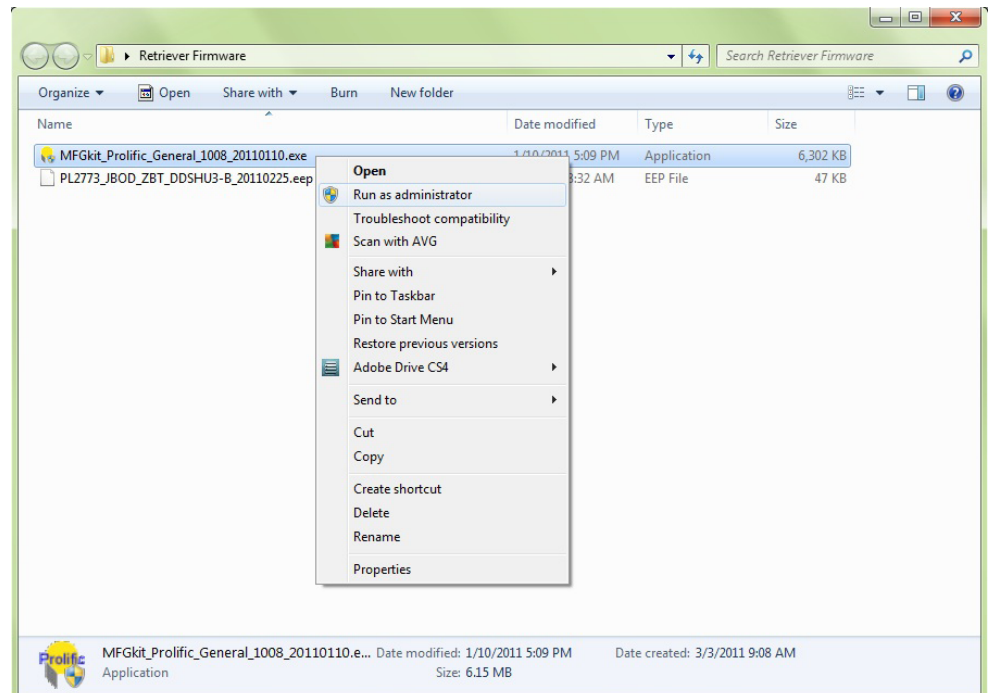
Unplug any other external devices from your computer, aside from the product you are updating.



4 STEP 4: Locate the “MFGkit_Prolific_General_1008_20110110.exe” file.

Right-click and select “Run as Administrator.”

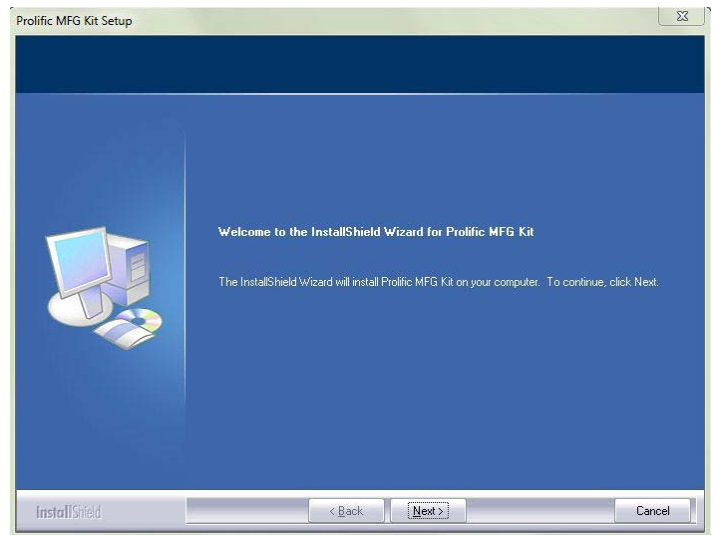
Allow this program to make changes to your computer.



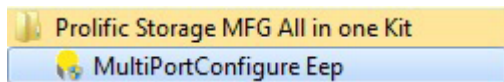
RETRIEVER INSTRUCTIONS

5 STEP 5: The installation guide for the update tool will then open. Continue to follow the instructions until the update tool is installed on your computer.

- a. Select Next
- b. Read and accept the licensing terms. Select Next.
- c. Make sure both boxes are checked and select next.
- d. Select Finish when the update tool is finished installing.



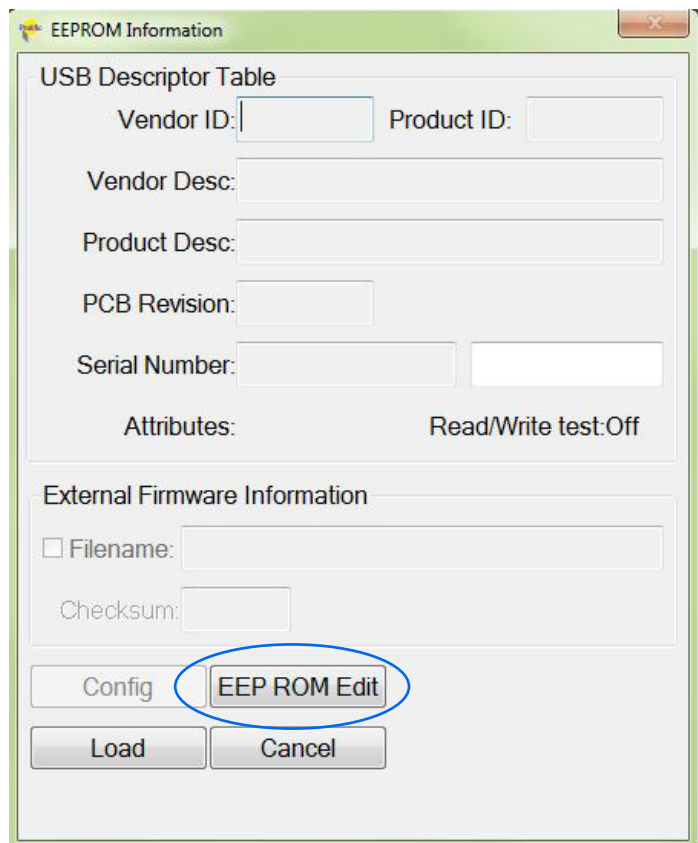
6 STEP 6: Find the Prolific Storage MFG All in One Kit and open the MultiPortConfigure Eep Tool.



You can also start the program by selecting the MultiPortConfigure Eep shortcut created on your desktop.

Note: Allow this program to make changes to your computer or access your hard drive.

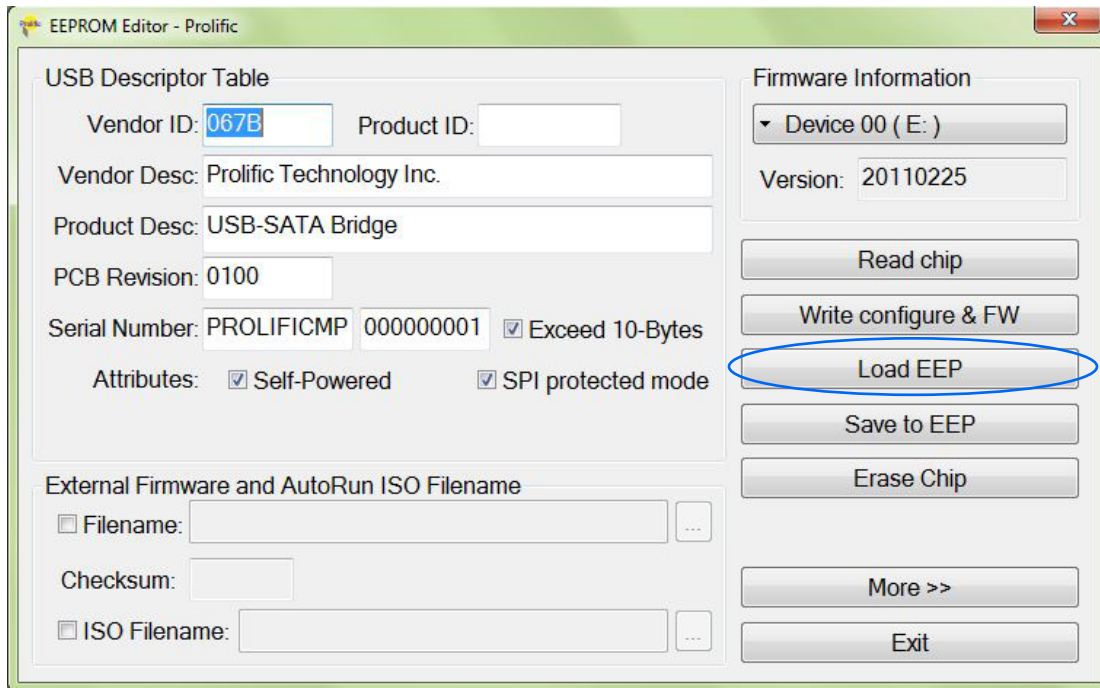
7 STEP 7: Once the program is open, select the EEP ROM Edit button.



RETRIEVER INSTRUCTIONS

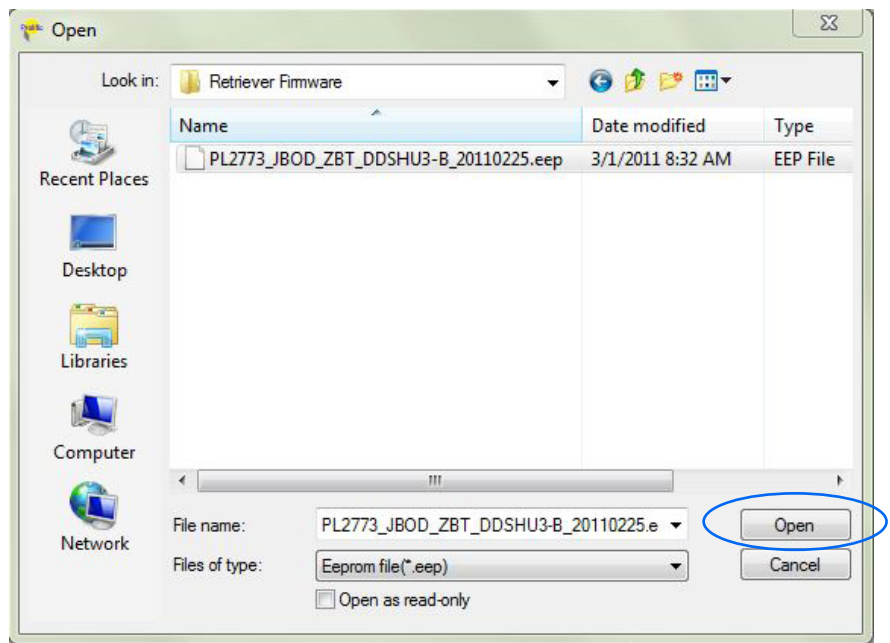


STEP 8: The screen shown below will appear. Now, select the Load EEP button.



STEP 9: Locate and open the Retriever Firmware folder on your Desktop or at the location where you unzipped the firmware file.

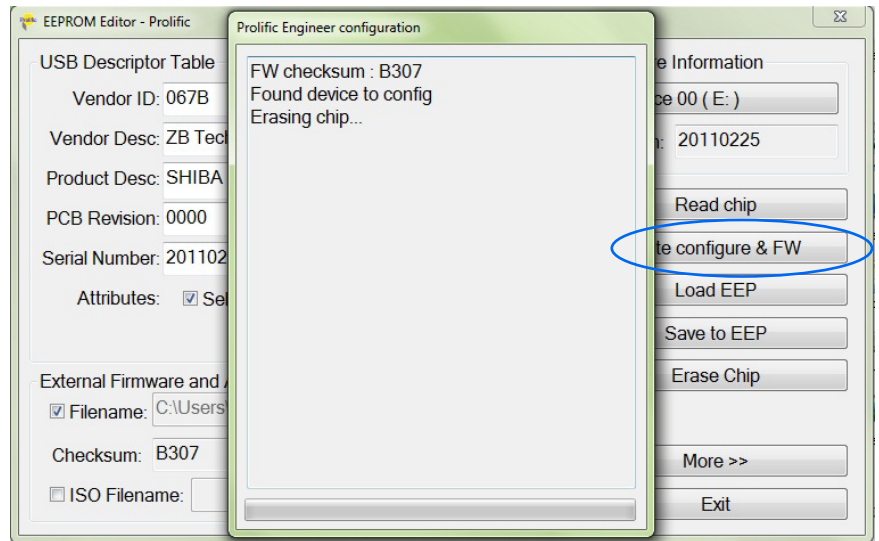
Select the "PL2773_JBOD_ZBT_DDSHU3-B_20110225.eep" file and press the "Open" button.



RETRIEVER INSTRUCTIONS

10 **STEP 10:** Press the “Write Configure & FW” button to begin the updating process.

Another screen will appear and show you the status of the update.



11 **STEP 11:** When the firmware is finished updating, a pop-up window will say “Config device completely.”

Press the “OK” button and exit out of the program.

Congratulations! Your firmware is now updated.

