



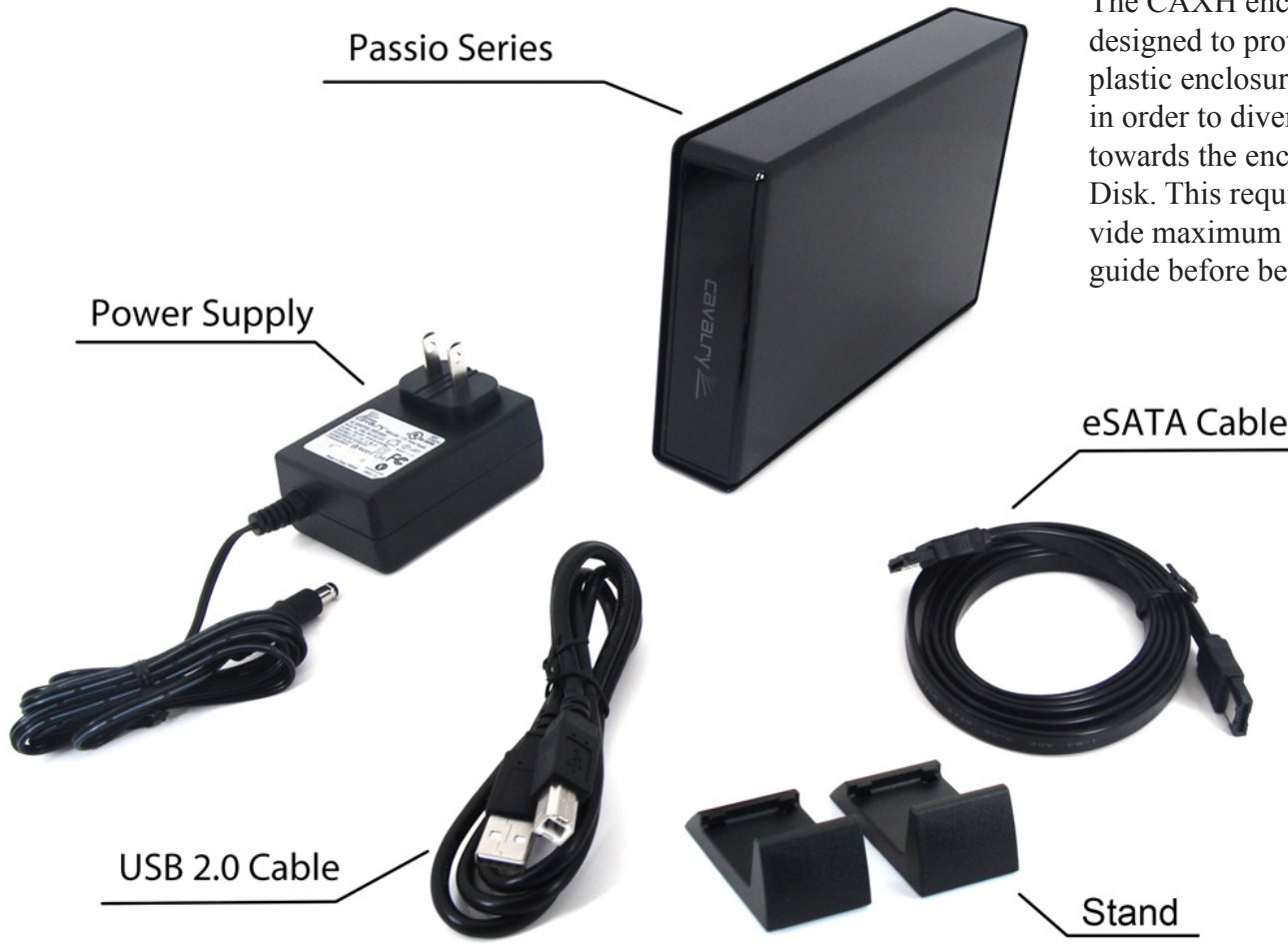
Cavalry™

Assembly Guide

EN-CAXH-B

Enclosure

Thank you for purchasing the CAXH user-configured enclosure! The CAXH enclosure is elegant, cost-effective, and primarily designed to protect your Hard Disk from shock. The sleek ABS plastic enclosure tightly conforms to the shape of your Hard Disk in order to divert the shock of accidental collisions and direct it towards the enclosure itself; safely away from the delicate Hard Disk. This requires a careful assembly process in order to provide maximum protection to your data. Please read the entire guide before beginning the assembly!



Note:

To reduce static discharge, do not assemble while on a carpeted surface.

Handle hard drives on the sides only. Do not touch any pins or connectors.

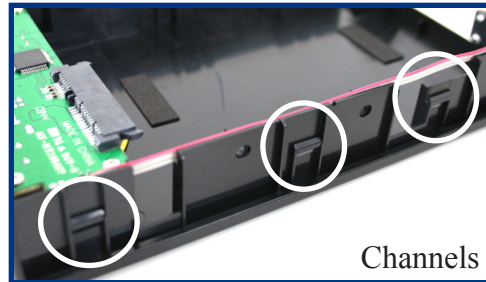
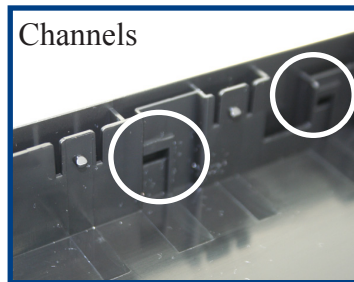
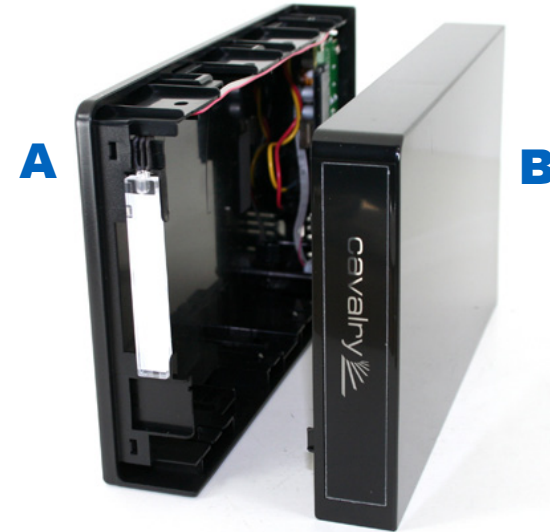


You will need (not included):

- ❖ Screwdriver with Philips head
- ❖ 1 SATA hard drive

1 STEP ONE

Remove the box contents. Put the two panels off to the side. The panel with the circuit board will be referred to as Panel A. The lid will be referred to as Panel B. Take this moment to count all of the channels on Panel A. Notice that half of them face inwards. Now count the tabs on Panel B. These are the main mechanisms that hold your CAXH together. They must be aligned precisely!



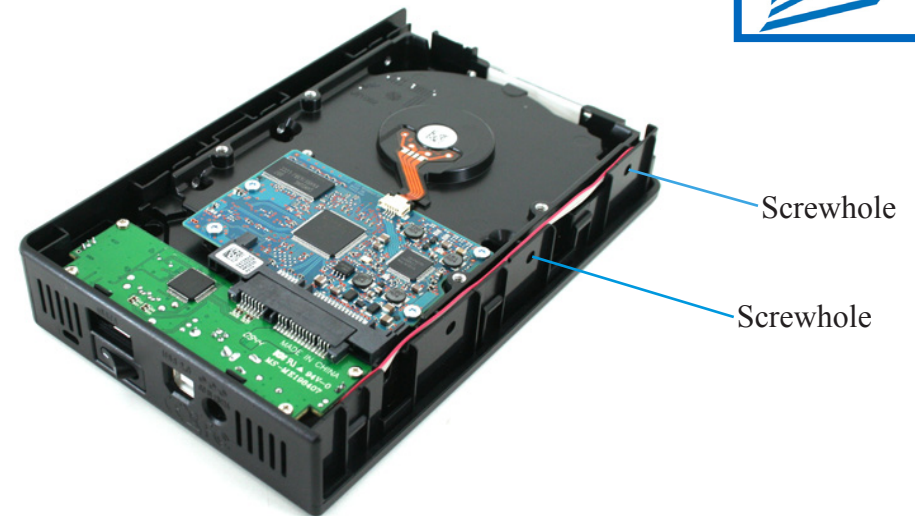
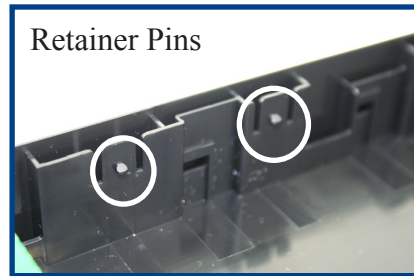
2 STEP TWO

Once you have tested your internal hard drive, then we can prepare to insert it into the enclosure. Turn your 3.5" SATA Hard Disk upside down, so that it's circuit board is facing up. Slide it into Panel A slowly, at a 45° angle, until the data port mates with the connector on Panel A.



3 STEP THREE

As you place the hard drive into the enclosure, watch the retainer pins on the right side of panel A. Once they have lined-up with the screw-holes on the side of your HDD, push the back end of the drive downwards, into the floor of Panel A. Do this slowly and firmly, making sure that all of the retainer pins on Panel A line up with the screw-holes on the HDD.



4 STEP FOUR

Use your thumbs to push around the edge of the drive until you feel that the drive is well-mated with Panel A. Then, insert the two HDD screws into Panel A, and beyond until they meet with the screw-holes of the HDD. You may have to push the drive inwards, towards the board on Panel A, in order to line the holes up. Tighten the screws slowly, but make sure not to indent the plastic. Finger-tight will do.



5 STEP FIVE

Now bring Panel B down slowly on top of Panel A. Take this time to make sure all of the tabs are lined up with the channels that you counted before. Push the longest tabs in halfway first. Make sure they are inside of the channels.

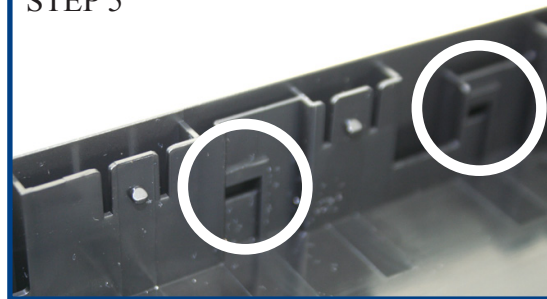
Warning! This is a one-time assembly! Before closing the case, check that all tabs are correctly seated inside their channels. Once aligned, the case will snap together smoothly and predictably.



6 STEP SIX

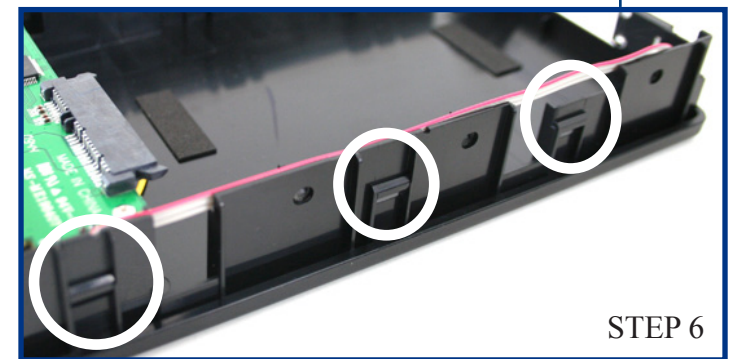
Now push the short tabs in just far enough to enter into the channels.

STEP 5



7 STEP SEVEN

Rotate the drive slowly and look down every edge. Check for any bump adjacent to a nearby tab. This means you will need to carefully remove Panel B and try again!

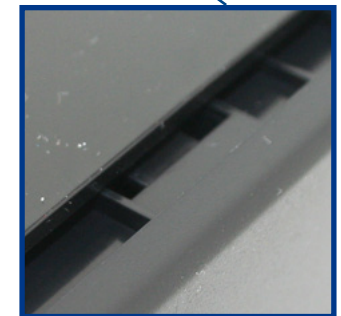


STEP 6



8 STEP EIGHT

Once all the tabs are lined-up, push down on the entire surface of Panel B until you here the snapping noises of the tabs engaging. Use your thumbs to go around the edges of the enclosure and engage every tab. Don't be afraid to squeeze the case a little. There should be an equal-space around the edge of Panel B.



9 STEP NINE

Plug-in your power supply and your USB cable. Make sure that you turn on your unit and enjoy!

*If you need any assistance initializing your drive within your OS, checkout CavalryStorage.com for detailed instructions.
Or, just email us at customersupport@cavalrystorage.com!