

User's Manual
CAUM Series



Preface

Copyright

Please respect copyrighted content. Duplication or modification of this publication in whole or in part is prohibited without express or written authorization.

Usage

Strong impacts or dropping the product may cause damage. Only allow qualified personnel to repair this product. Disassembling or opening this product will void your warranty.

Disclaimer

Cavalry is not liable for compensation for data loss which may result from a malfunction of the product or from changes due to improper use, repairs, defects, or battery change. Please back up your data to avoid unexpected losses. Cavalry reserves the right to make changes to the content of this manual without notice. The most current manuals and software are available for download at our download page: www.cavalrystorage.com/su_download.htm

Thank you for choosing Cavalry.

We at Cavalry extend our sincere gratitude for your purchase of this product. We hope our dedication to delivering high quality products with excellent customer service will ensure your continued interest in our products.

This manual will assist in the operation of the product. To optimize your experience with this product, we recommend reading this entire manual before usage. Please keep this manual for future reference.

Table of Contents

Preface	2
List of Accessories	5
Product Illustrations	6
Features	8
Setup Instructions	9
Troubleshooting	16
Warranty	18
Contact	19

List of Accessories

1. External power adapter (may vary with product)
2. Resources CD
3. USB 2.0 cable



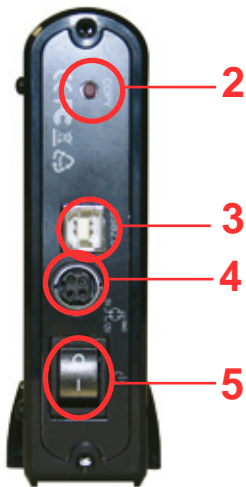
Front



1. Power light indicator

Back

2. One Touch Backup Button
3. USB 2.0 port
4. 4-pin power jack
5. Power switch



Features

One Touch Backup

Plug-and-play for Windows 2000/XP/Vista

USB 2.0 Interface

Pre-formatted to NTFS

Exceptional heat dissipating ability

Hard drive activity LED

Nearly silent operation

Slim and lightweight stackable design

Designed for use with a PC

Setup Instructions

Follow the steps below to successfully set up your Cavalry External Hard Drive with your computer.

Step 1. Start your computer and wait for Windows to load completely.

Step 2. Connect the power adapter to the drive. (Fig. 1)
Then plug the power adapter into an electrical outlet.



Fig. 1

Step 3. Connect the square end of the USB cable to the hard drive. (Fig. 2)
Then connect the flat end of the USB cable to the USB port on your computer. (Fig. 3)

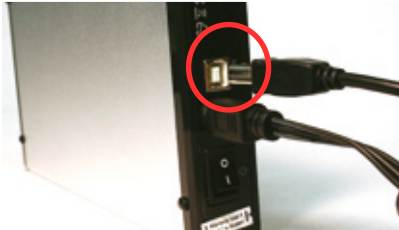


Fig. 2

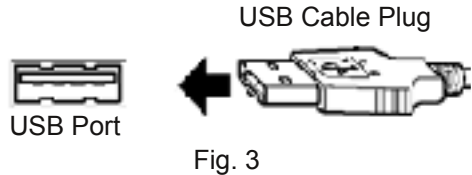


Fig. 3

Step 4. Turn the power switch on.

NOTE: Connect the USB cable to the drive **before** connecting the cable to the computer. To disconnect, remove the cable from the computer **first**.

Step 5. Installing drivers for the Cavalry External Hard Drive.

Windows 2000/XP/Vista

Plug-and-play. No device drivers or configuration required. The computer will detect the USB External Hard Drive as a new USB device and display messages on the bottom-right corner reading "USB Mass Storage Device Detected" and "Your new hardware is installed and ready to use."

Windows 98/Me

1. Make sure Windows 98/Me is fully updated
2. Download drivers from www.cavalrystorage.com/su_download.htm
Click on "Windows 98 Driver" to download file. Extract the file.
3. Navigate the device manager.
4. Right-click on the yellow question mark indicating an unknown

external storage device.

5. When the device driver wizard starts, click on the "Browse" button to select the search directory to find drivers.

6. Find the USB 2.0-98 driver in the extracted file.

7. Click "Next" to continue.

Mac OS X

Reformat the external hard drive using Disk Utility on the OS. Please note that One Touch Backup software will NOT work with Mac OS.

Step 6. One Touch Backup (OTB) installation

1. After your drive is connected, turned on, and recognized by your computer, insert the included CD and open the "Contents" folder, then open the "CAUM" folder, then open the "OTB" folder.

2. Open the folder that corresponds with your operating system.

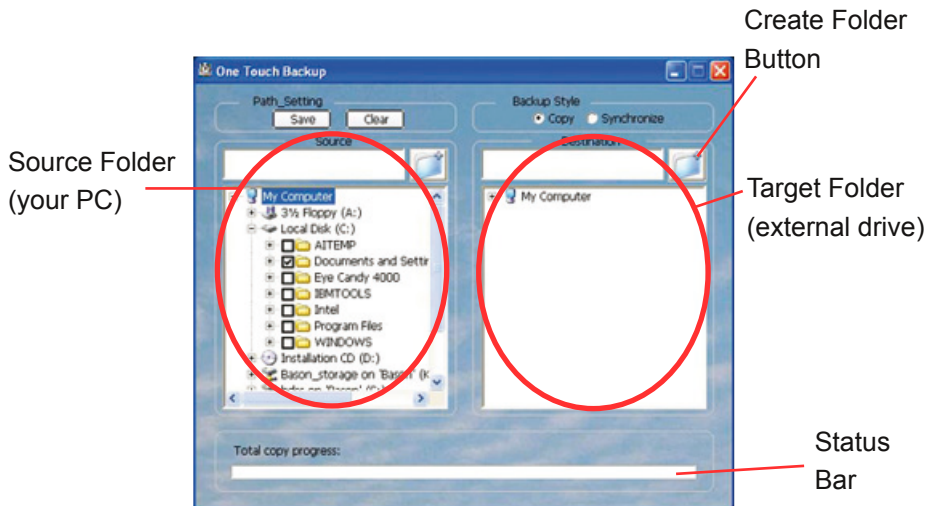
3. Run the "setup.exe" file
4. An installation wizard will appear, then choose your language.
5. Click "Next" then click "Install" to begin installing OTB software.
6. Click "Finish". You may need to restart your computer.

Step 7. Setup of OTB Software

1. Run the OTB program. You may have to click the system tray icon. With the program running, first select the folder(s) in the left window that you want to back up. These are the folders on your computer that will be backed up and are called the **Source Folders**.

NOTE: You cannot back up the entire operating system, i.e. you may not select the entire C: Drive when selecting the Source Folder.

2. Now, on the right window, select a folder in your external hard drive (under My Computer) or create a new folder via the blue folder icon to which to back up the data. This folder is called the **Target Folder**, and it is the backup location on your external hard drive.



3. Click "Save" under "Path Setting" on the top left-hand corner. The software will now remember the Source and Target Folders.

4. Under "Backup Style", select **Copy** or **Synchronize**. "Copy" will copy files in the source folder to the target folder, overwriting if necessary, but not deleting files in the external hard drive.

Synchronize will make the target folder exactly the same as the source folder (not vice versa). It may delete files that are in the target folder if they are not in the source folder.

5. To run OTB, press the red Copy button on the back of your drive. You will be able to see the progress of this backup in the "status bar" under "Total copy progress" (if the menu is open). For all subsequent times using OTB, just plug in the external drive and press the red **Copy** button. Your files will be automatically copied or synchronized to the external drive without manually running the program again.

Step 8. Your external hard drive is now ready to use.

Troubleshooting

LED light indicator does not turn on

Make sure the power adapter is securely connected to a working electrical outlet. Secondly, make sure the USB cable is inserted correctly into the hard drive and the computer. Turn on the power switch (see page 6).

Computer does not detect hard drive

Make sure the USB cables are securely connected. If this does not work, attach another known working device and working cable into the USB port on the computer. If your computer does not detect this known device, the problem could be your computer's USB port. If the port and cable both work and the hard drive is still not detected, contact customer support.

Loud noises coming from external hard drive

In most cases, loud noises coming from the drive suggest a defective drive or a loose part. We apologize for any inconvenience this may cause. Please contact customer service for assistance.

Hard drive will not work with my Mac

Format the hard drive to use with a Mac. Note that even if this drive is formatted for Mac, the One Touch Backup software will not work. The "Contents" folder of the CD contains a "Formatting Instructions" PDF as well as a guide to using Apple Time Machine, software that is similar to OTB.

One Touch Backup software will not work

The One Touch Backup software must be installed while the drive is connected and recognized by your computer. If you installed the OTB software without connecting your drive, uninstall the OTB software by

running the "setup.exe" file again and checking "remove." Then reinstall the software (with your drive connected), following the instructions in this manual.

I cannot back up my operating system or certain files

The CAUM cannot back up operating systems, or files that are in use. Make sure you have closed any applications or files that may be in your "Source Folder" on your computer. One Touch Backup will not be able to copy files that are in use.

If you have more questions, please refer to the **Frequently Asked Questions** section online at: www.cavalrystorage.com/su_faq.htm For further inquiries, you may contact Bason/Cavalry technical support at customersupport@cavalrystorage.com.

Warranty

This product comes with a one year warranty from the date of purchase. Please register your product at www.cavalrystorage.com/prodreg.htm to activate the warranty. Please have your Serial Number and Model Number ready. We are not responsible for any loss of data. Please back up your data often to avoid unexpected losses.

Contact

Cavalry Storage, Inc.
555 E. Easy St.
Simi Valley, CA 93065

customersupport@cavalrystorage.com
www.cavalrystorage.com

CA1133

062708