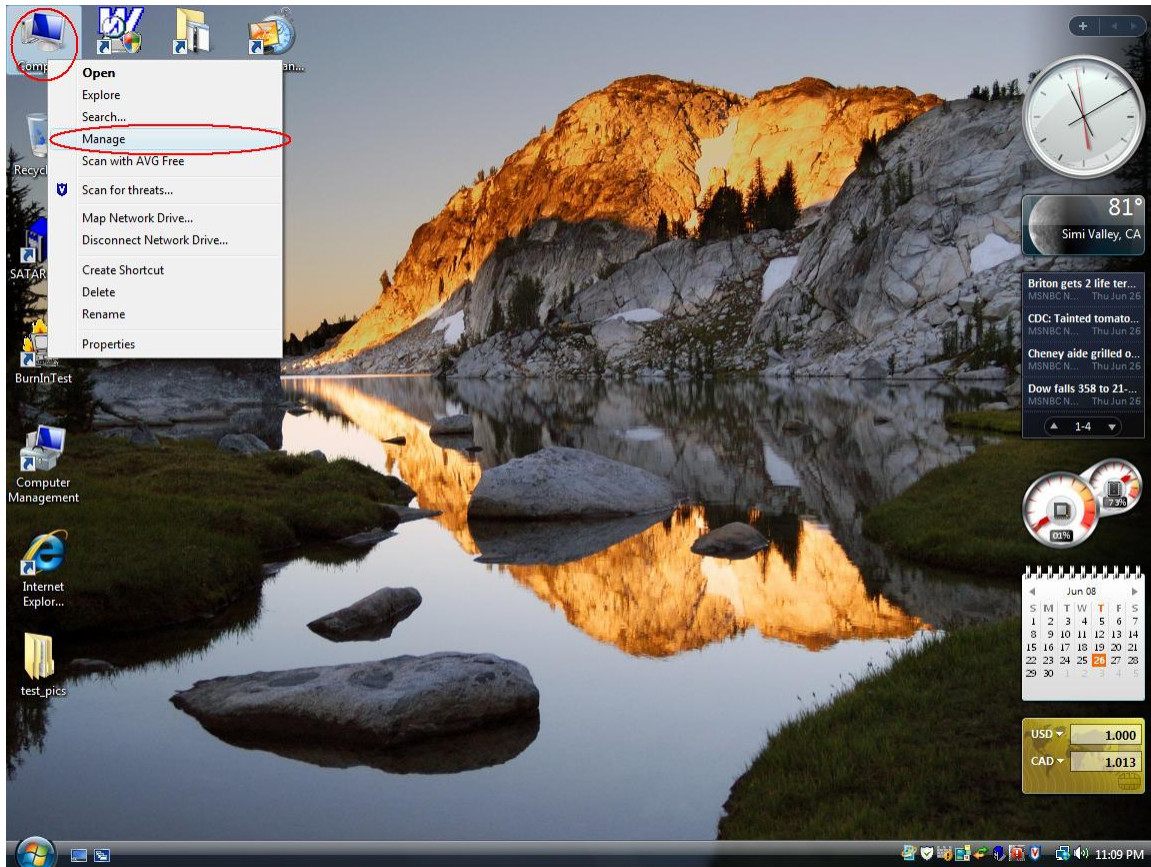


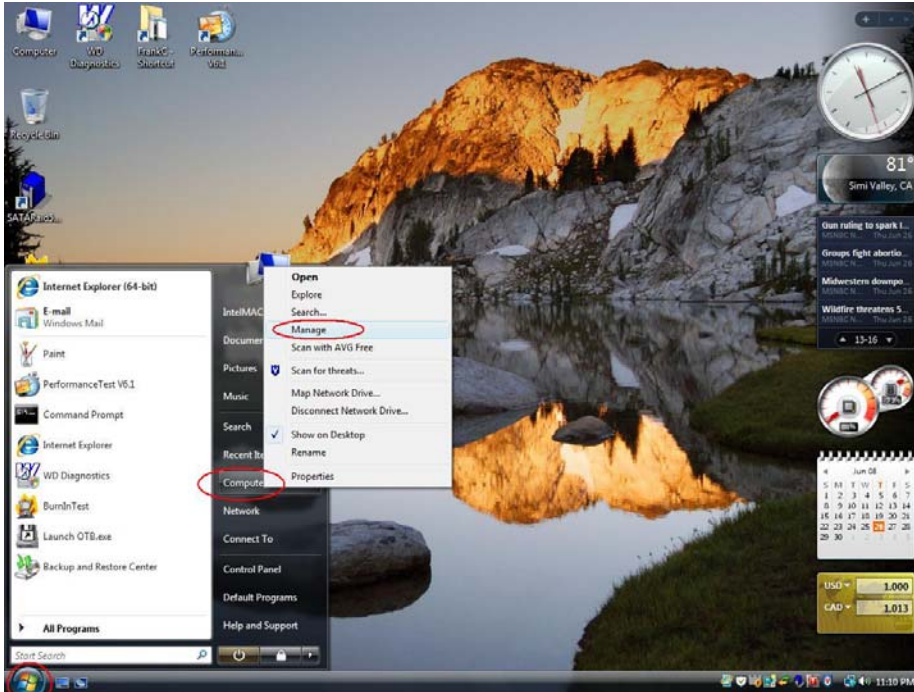


Detecting a Cavalry USB external hard drive in Windows Vista

1) Right-click on "My Computer" icon and select "Manage".



Alternatively, you could click on "Start" and Right-Click on "Computer" in the start menu. Then left-click on "Manage".



2) In the Computer Management console, expand "Device Manager" and on the middle pane expand the heading "Disk Drives". Your Cavalry external drive should be listed. You can right-click on the listed drive and select "Properties" to see the status of the drive.

