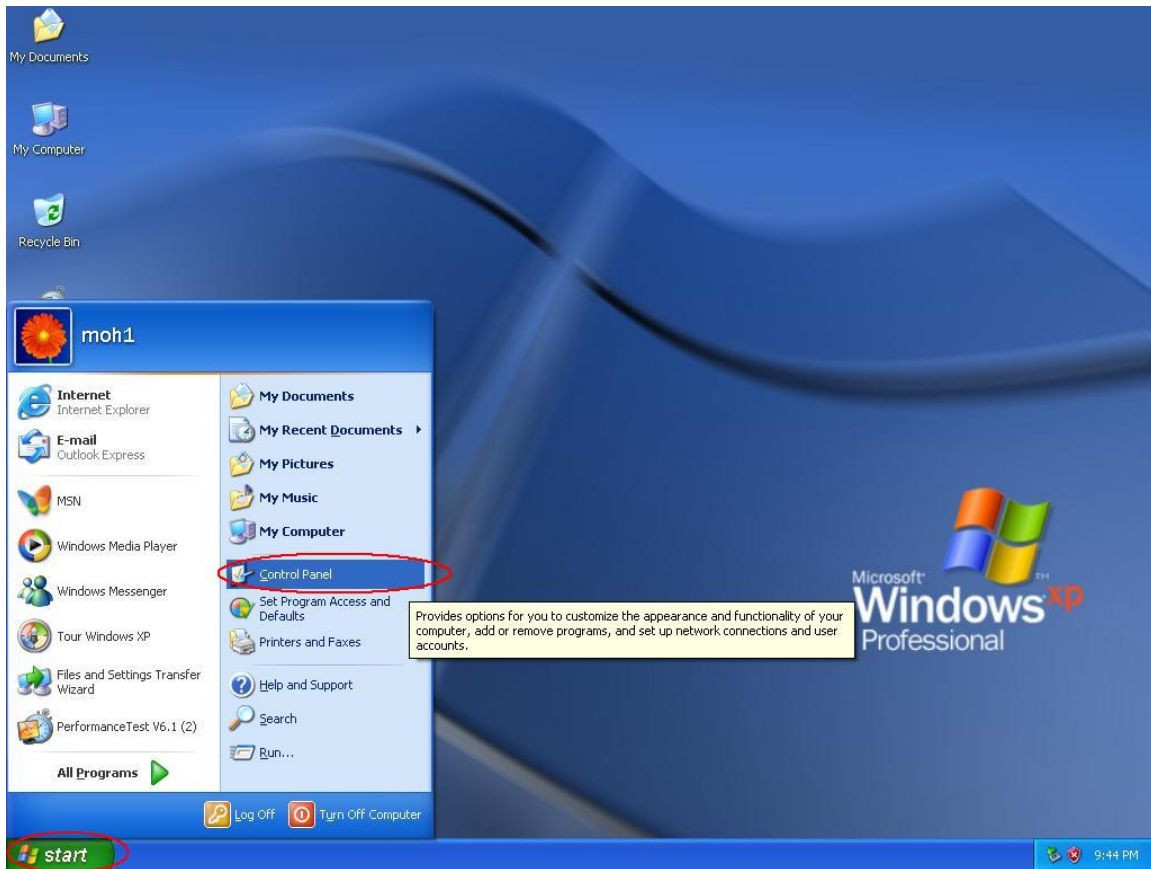


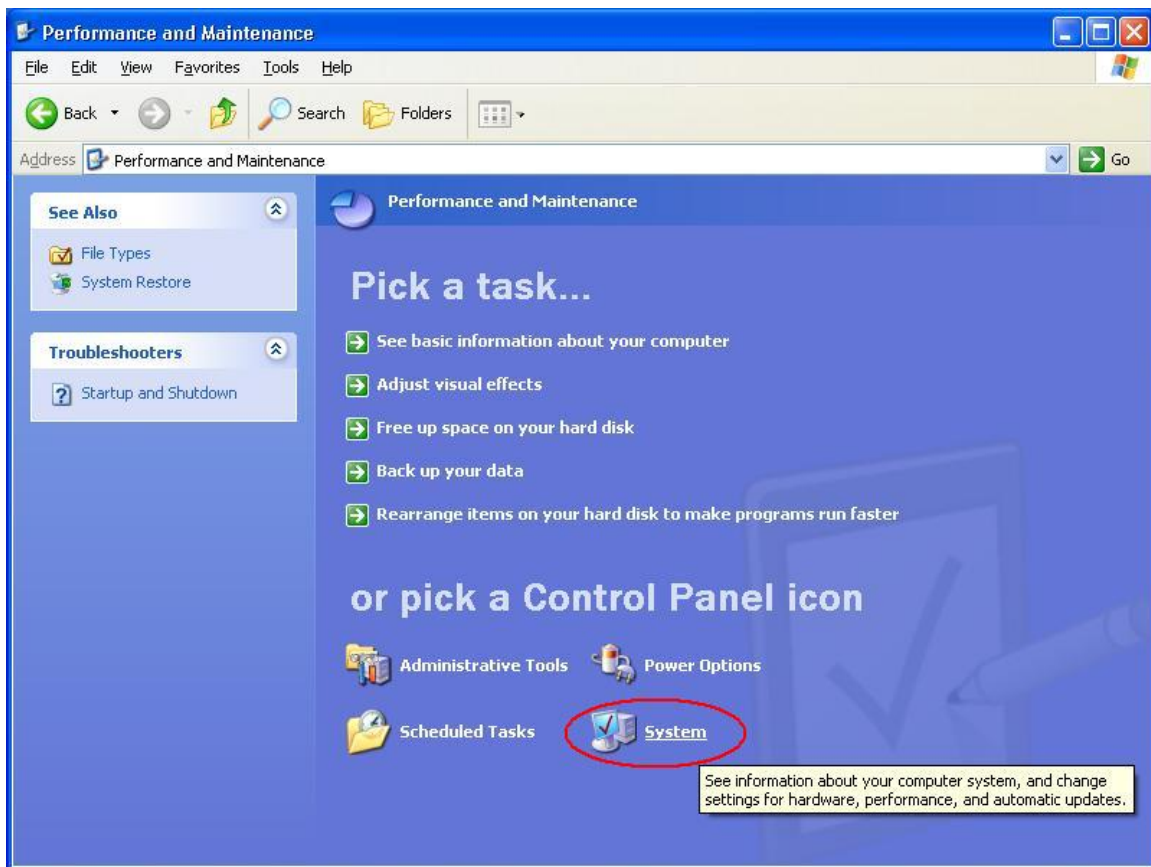


Detecting a Cavalry USB external hard drive in Windows XP

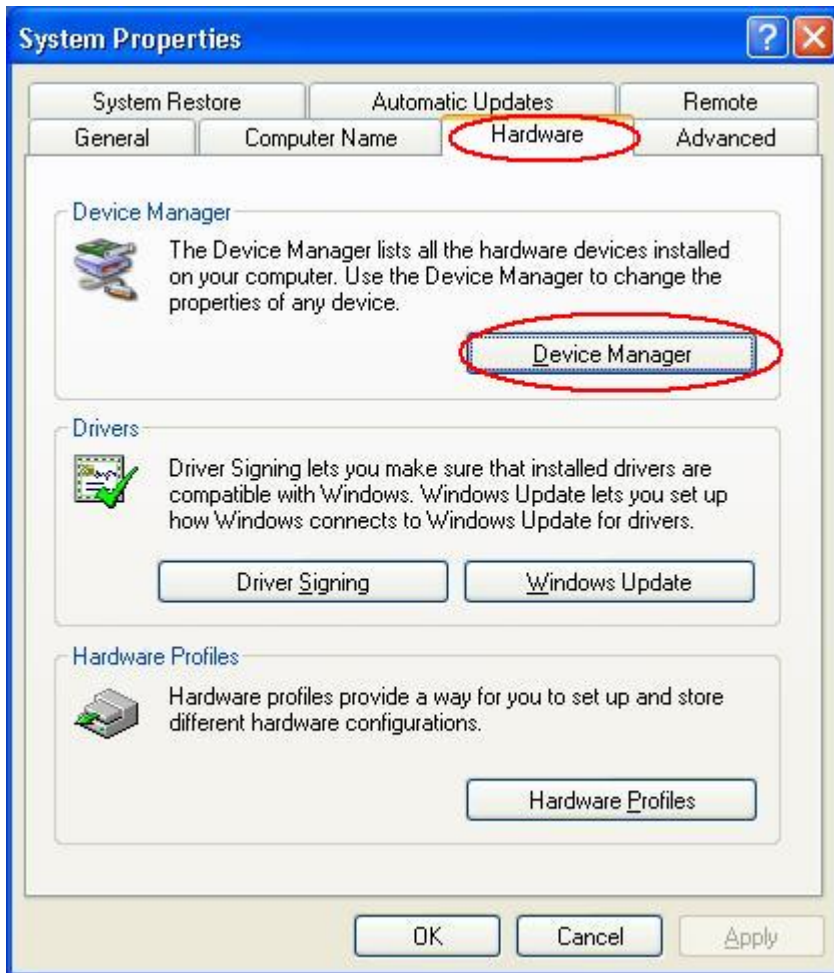
1) Go to the START menu and select "Control Panel"



2) Double-click on the "System" icon. If your Control Panel window is in Classic mode, you can still double-click "System".



3) In System Properties, select the "Hardware" tab. In the Hardware pane, click on "Device Manager".



4) Now you can expand "Disk Drives" and be able to see the external hard drive if everything is connected correctly. You can also right-click on the listed external hard drive, then select "Properties" to see the status of the external hard drive.

