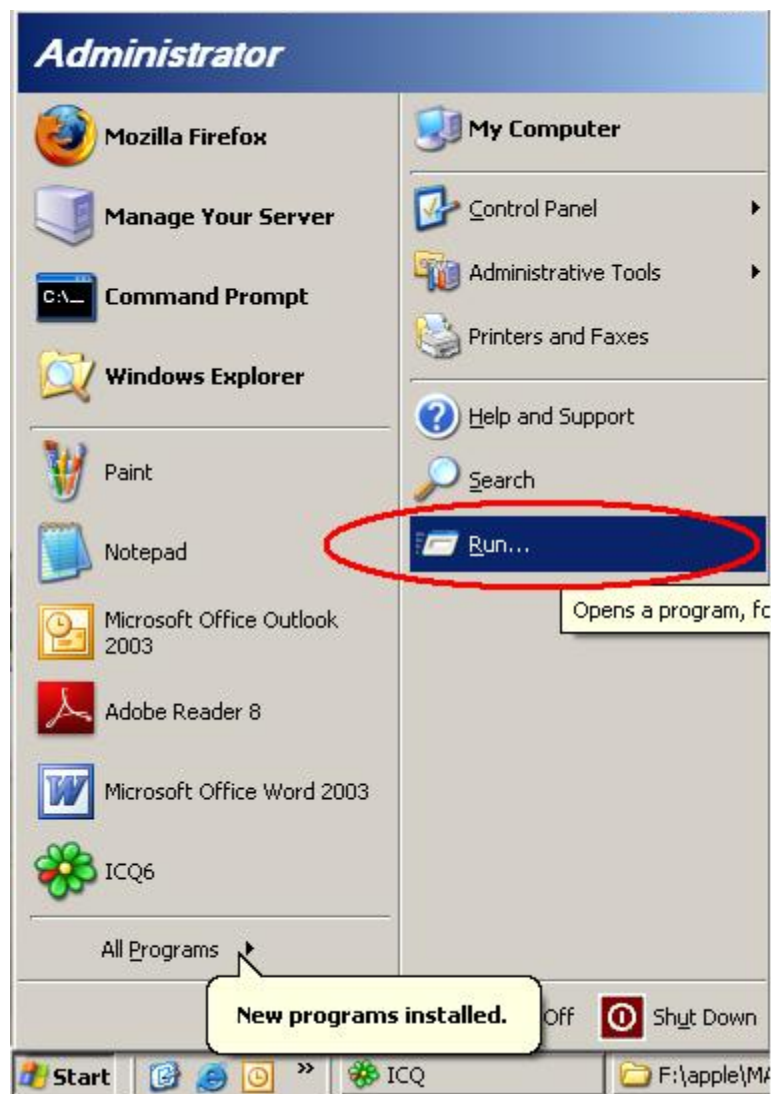




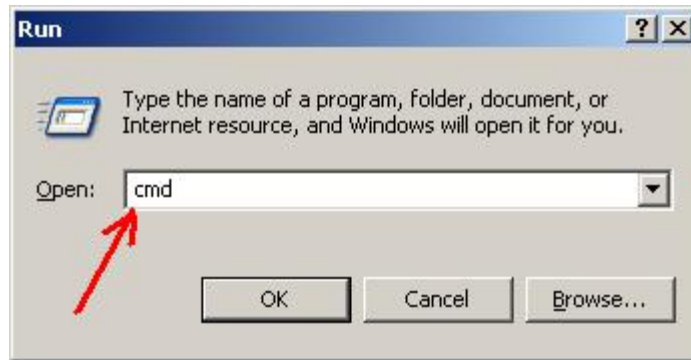
Guide: using Windows 2000/XP/NT/Vista console command DISKPART to clean and uninitialize an external hard drive.

This guide may be useful for users who want a completely clean and uninitialized drive to reformat for use with a DVR system or Mac computer, for example. This guide is also useful for cleaning a drive of all RAID settings before changing jumper settings.

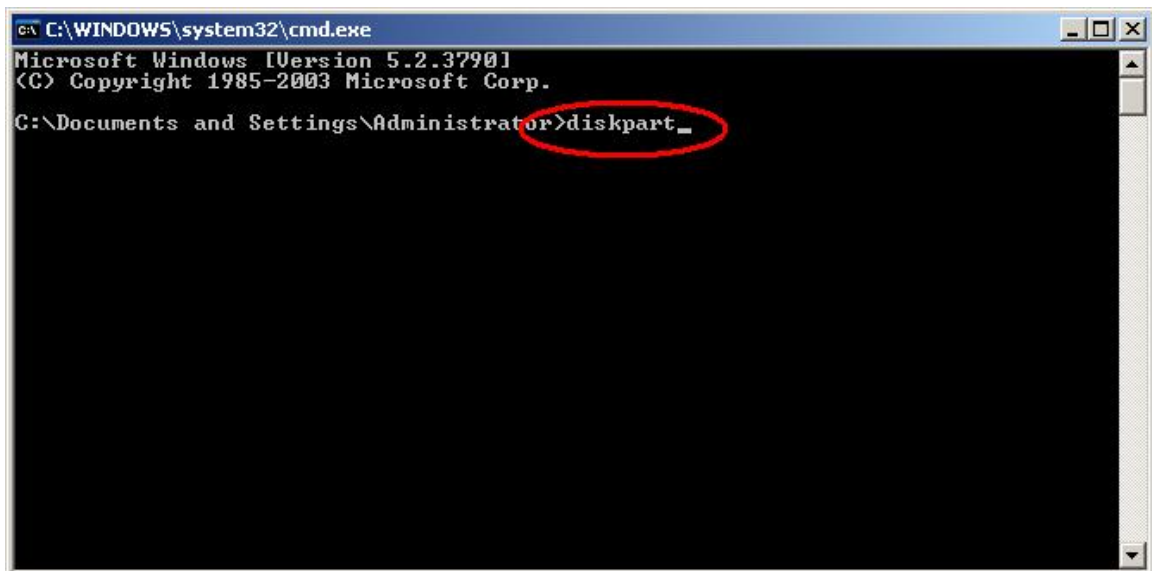
1) Go to the Start Menu. Click on "Run".



- 2) The Run dialog box will show up. Enter "cmd" in the text box then press the <ENTER> key.



- 3) Virtual DOS command console window will start. You will see the blinking cursor where you can type commands. Now type "diskpart" as shown then press the <ENTER> key.



- 4) Now to use DISKPART. Warning: Be careful not to select your system drive as you could erase it and your current Windows system!
- Type "list disk" to show all of your physical drives. Identify which is the external drive. Make sure you know which before continuing.
 - Now select it by typing "select disk #", where # is the number of the drive listed in the disk list.
 - You can check that you selected the drive properly by typing "list disk" again. The table will appear again with an asterisk (*) next to the selected disk.
 - Now type "clean" to completely un-allocate and un-initialize your disk. Make sure you've selected the correct disk before typing "clean".
 - The drive is cleaned now. You can type "exit" to exit DISKPART and type "exit" again to exit the virtual DOS window, or just close the window to get back to your Windows desktop.

```
C:\>diskpart

Microsoft DiskPart version 5.2.3790.1830
Copyright (C) 1999-2001 Microsoft Corporation.
On computer: TECH3842

a. → DISKPART> list disk

Disk ###  Status  Size  Free  Dyn  Gpt
-----  -
Disk 0    Online  190 GB  8033 KB
Disk 1    Online  233 GB  233 GB

b. → DISKPART> select disk 1

Disk 1 is now the selected disk.

d. → DISKPART> clean

DiskPart succeeded in cleaning the disk.

e. → DISKPART> exit

Leaving DiskPart...

C:\>
```