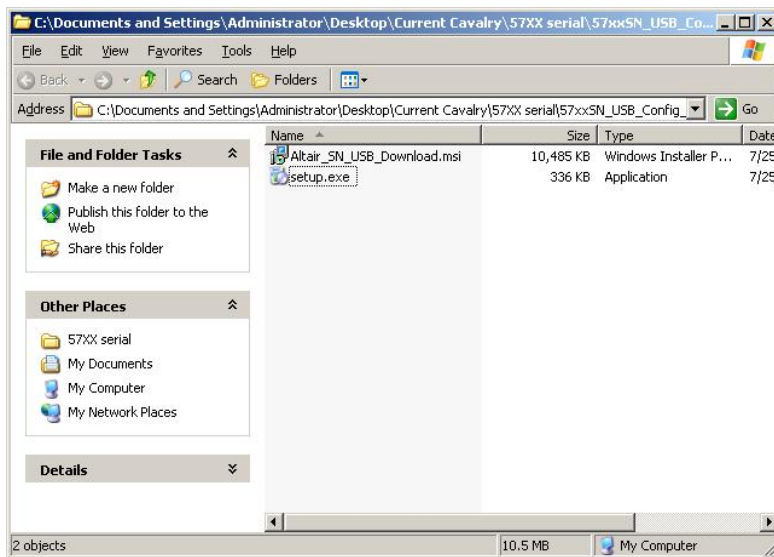




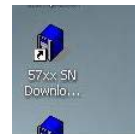
SERIAL NUMBER CONFIGURATION GUIDE

Use this guide to set unique serial numbers for using multiple dual-bay arrays with the Steelvine software.

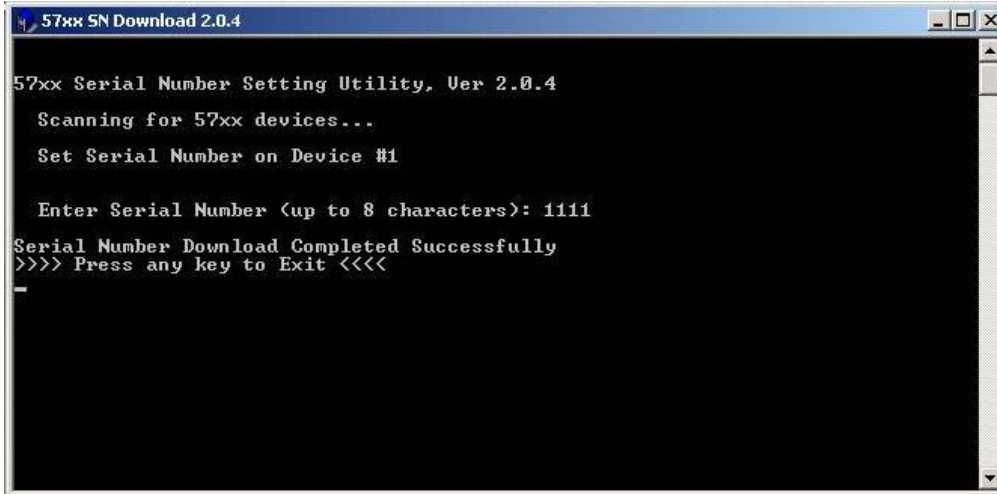
- 1) Download the "Serial Number Configuration Software" from our Downloads webpage: http://www.cavalrystorage.com/su_download.htm
- 2) Extract the files. Navigate to the extracted folder as shown. Now double-click on "setup.exe" to install. Follow any on-screen instructions.



- 3) Two shortcuts will appear on your desktop. Turn on and connect ONE of the external dual-drive arrays which you need to configure. Double-click "57xx SN Download 2.0.4" (icon pictured to the right)



4) You will see the console program run. It will prompt you for a serial number which you can choose to enter as follows:



5) After you've entered your number (1111 in this example) you can exit the console program. Now press the "Reset" button on the back of your external drive. Wait for your external drive to re-recognize.

6) Now you can enter Steelvine manager and be able to flip through the tabs at the top of the window to see the specific RAID configuration of a dual-drive by serial number. To add more drives, turn off all other external dual-drives except the one whose serial number you wish to change and repeat the steps above. After you have created unique serial numbers for all drives, you should see one tab for each drive in your Steelvine Manager:

